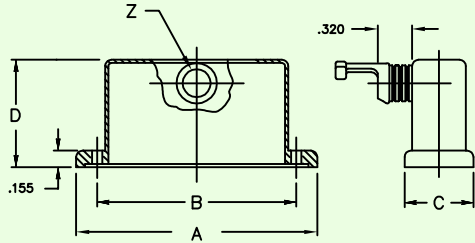
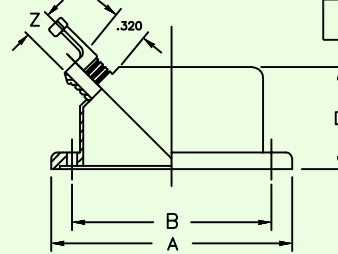


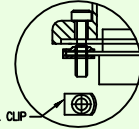
PART NO.			
902-344			
REVISIONS			
LTR	ECO NO.	DRAWN	APPR.
A		SJDC	
		10-29-15	



STYLE F

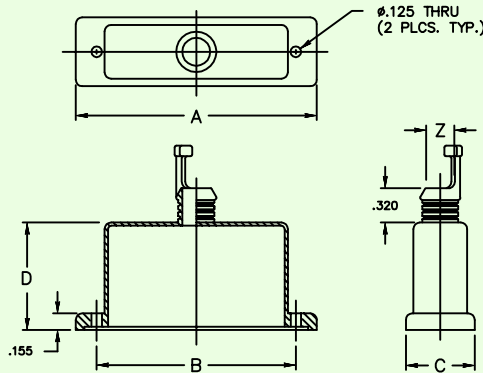


STYLE A

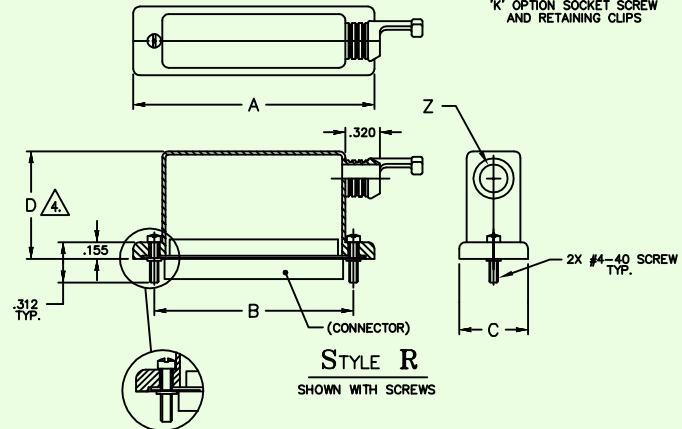


STAINLESS STEEL CLIP

SEE EXAMPLE PART NUMBER 'K' OPTION SOCKET SCREW AND RETAINING CLIPS



STYLE S



STYLE R  
SHOWN WITH SCREWS

NYLON WASHER  
SEE PART NUMBER

Example Part Number

902-344S1504156\*

BASIC ADAPTER NO.

ADAPTER STYLE  
S = STRAIGHT ADAPTER  
R = 90° SIDE ADAPTER  
A = 45° ADAPTER  
F = 90° FRONT ADAPTER

JACKSCREW TYPE  
F = 2 MALE FILLISTER  
H = 2 MALE HEX SOCKET  
J = 2 FEMALE JACKPOST  
K = CLIP AND MALE HEX SOCKET  
LESS WASHERS  
OMIT IF JACKSCREWS & WASHERS NOT REQUIRED

CONNECTOR SHELL SIZE			
SHELL SIZE	A ±.030	B ±.005	C ±.030
9	1.366	.984	.640
15	1.694	1.312	.640
25	2.241	1.852	.640
37	2.882	2.500	.640
50	2.778	2.406	.750
104	2.882	2.500	.812

ENTRY CODE	
ENTRY CODE	ØZ ±.005
0 1	.160
0 2	.190
0 3	.220
0 4	.260
0 5	.275
0 6	.285
0 7	.350
0 8	.490

HEIGHT CODE	
HEIGHT CODE	D ±.03
BLANK	.785
0	1.000
1	1.25
2	1.50
3	1.75
4	2.00

PLATING CODE NUMBER  
CODE 56 - ELECTROLESS NICKEL, PER SAE AMS-C-26074, WITH IRIDITE CONVERSION.  
FOR ADDITIONAL FINISH, SEE CATALOG TABLE 4

NOTES: UNLESS OTHERWISE SPECIFIED.

- ASSEMBLY IDENTIFICATION PER MIL-STD-1285.
- MATERIAL: BACKSHELL - ALUMINUM ALLOY.  
HARDWARE - 300 SERIES SST

3. SCREWS ARE CAPTIVATED WITH NYLON WASHERS.

4. MIN HEIGHT CODE IS '0' FOR 45° & 90° BACKSHELLS

The information disclosed herein is the property of, and a proprietary item originated by ELECTRO ADAPTER, INC., who reserves all patent, proprietary design, use, sale, manufacturing and reproduction rights thereto; except for uses expressly granted to the United States Government and items which are vendor parts, disclosure shall not be made without written consent from ELECTRO ADAPTER, INC.

UNLESS OTHERWISE SPECIFIED DIMENSIONS ARE IN INCHES

TOLERANCES: ANGLES      DECIMALS  
± 2°      .XX = ± .06  
            .XXX = ± .031

DO NOT SCALE DRAWING

DRAWN	DATE
SJDC	7-31-15
CHKD	DATE
APVD	DATE
GF	7-31-15
GF	7-31-15
RELEASED	DATE

<b>ELECTRO ADAPTER, INC.</b> CHATSWORTH, CA. 91311-6189			
DRAWING TITLE			
BACKSHELL, STRAIGHT, 45°, 90°, FRONT, EMI/RFI, TY-WRAP, BAND TERMINATION FOR MIL-DTL-24308, D-SUB, PANELMOUNT,			
SIZE	CAGE CODE	DRAWING NUMBER	REV.
A	31461	902-344	A
SCALE: NONE	/0/SALES/902/344	SHEET	1 OF 1